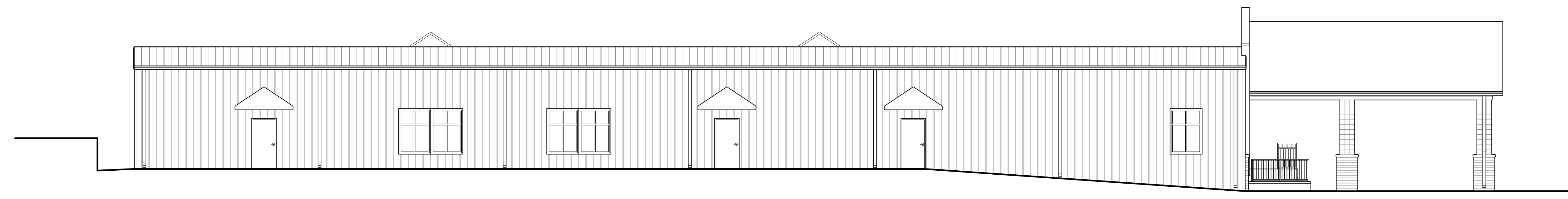


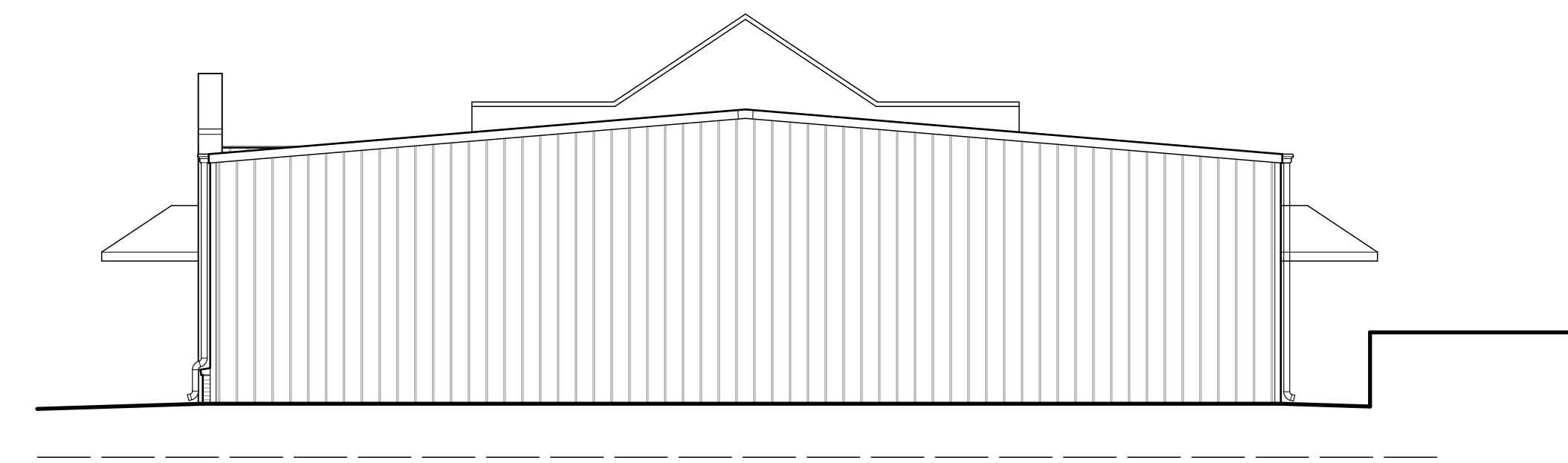
5 Pre-Engineered Building Section
SCALE: 1/4" = 1'-0"



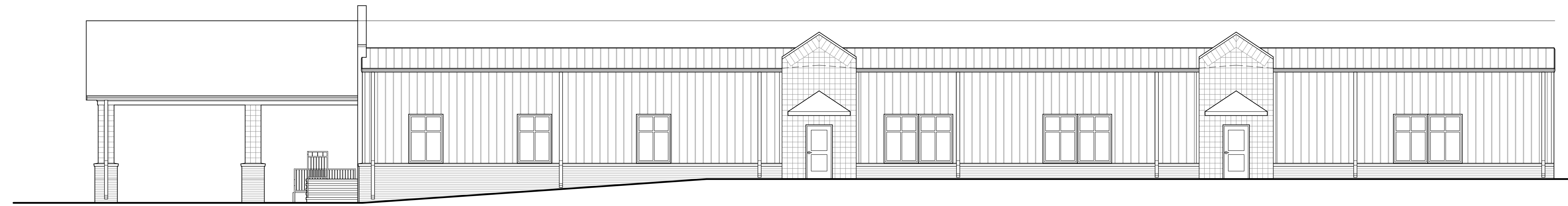
4 West Elevation
SCALE: 1/8" = 1'-0"



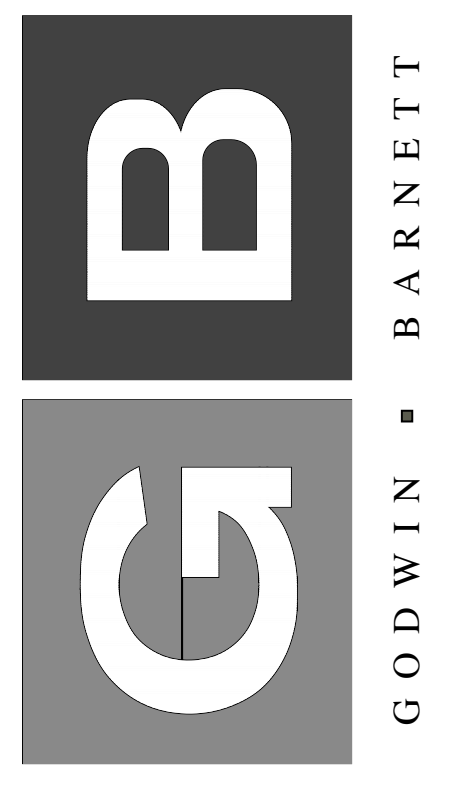
2 South Elevation
SCALE: 1/8" = 1'-0"



3 North Elevation
SCALE: 1/8" = 1'-0"



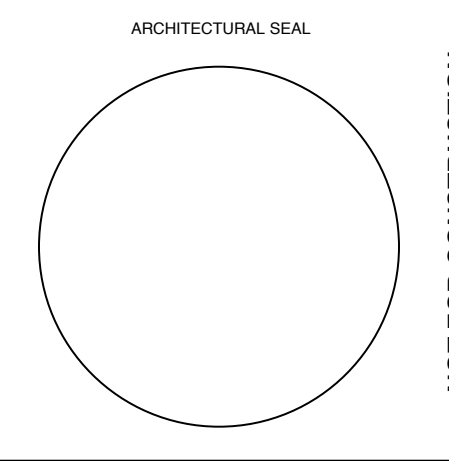
1 East Elevation
SCALE: 1/8" = 1'-0"



709 Bank Street Decatur, Alabama
256.355.5212 P 256.355.7273 F
www.godwinbarnett.com

A NEW EDUCATIONAL BUILDING FOR
SOUTH DECATUR CHURCH OF GOD
3103 SPRING AVENUE S.W.
DECATUR, ALABAMA 35603
PROJECT NUMBER 08075

DATE: 07/14/08 FILE: A401



THESE DRAWINGS ARE THE PROPERTY OF GODWIN BARNETT AND SHALL NOT BE USED OR REPRODUCED WITHOUT WRITTEN APPROVAL FROM GODWIN BARNETT.
© COPYRIGHT 2008 GODWIN BARNETT, P.C.

SHEET NO.
A401
OF TOTAL

NOT FOR CONSTRUCTION